

The range Module

The module has been written in VB6 and it should be migrated to asp.net to become a web-driven application.

Here are some pictures of the actual version:

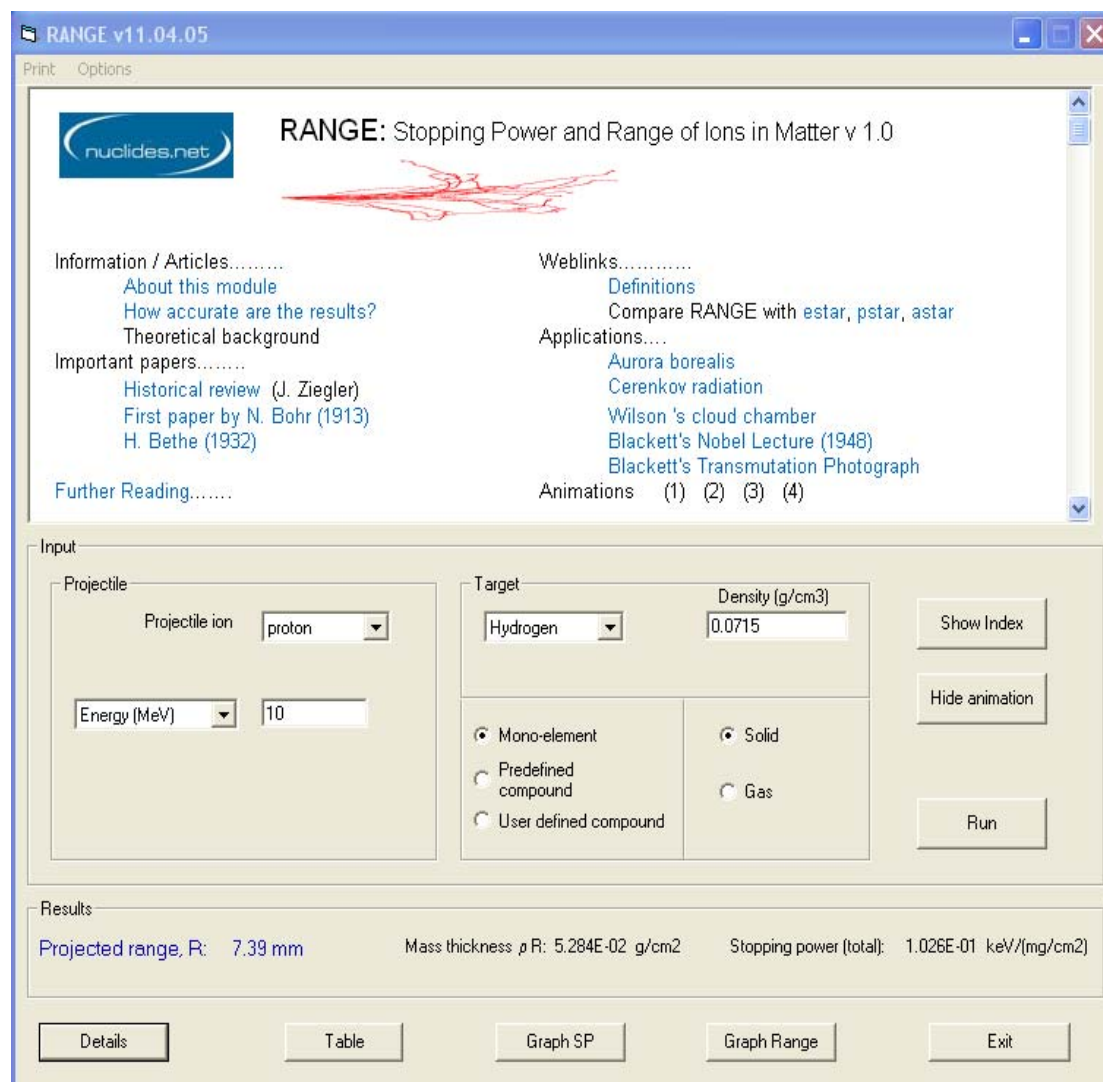


Figure 1. Main interface of the new RANGE module. The upper window opens links and information about the module and related physics.

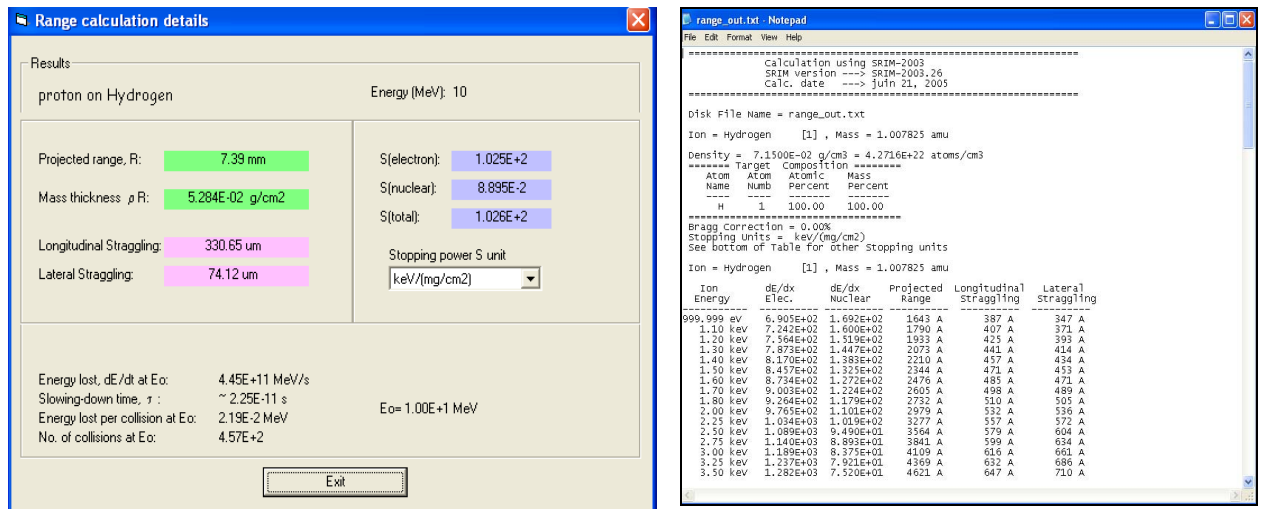


Figure 2. Generated output from the RANGE module.

And what it should look like when the application is migrated to web driven application. Please note that the window with the html information display present in the VB application has been removed in the web application. The given design is the one to be used in the web site, try to fit as much as possible to it.

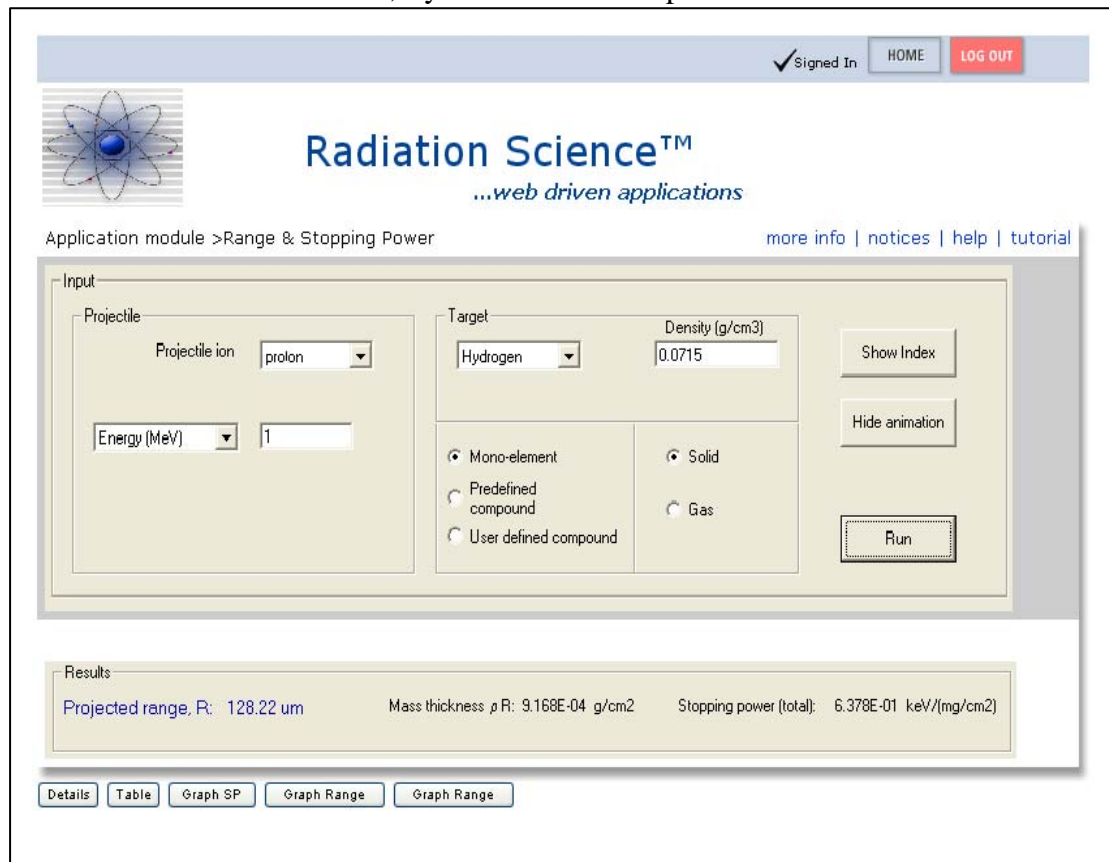


Figure 3 . Planned integration of the RANGE module in the new Nuclides.net site layout.

Note1: the VB application uses Origin 7.5 Pro active server interaction to plot the graph. The Web application will use as well this process to create the graph to be displayed to the users.

Note2: The VB project includes an access DB dbrange.mbd. The web application will be connected to an SQL server (MS SQL server) containing the same tables.

Note3: if necessary part of the code can be coded in a separate dll to be accessed by the web server. In this case please code it under .net framework.

Use latest version of .net framework.

Important note: the main calculations are performed by calling thru the shell the “SRmodule.exe” (detailed in the HELP- SR Module.rtf file) and then the results are read parsing an output file. At the moment we don’t have access to the original code of the exe file, thus when migrating to asp.net the developer should find the most appropriate way to access this calculation module (or alternative approach) keeping in mind that the process should be multi-thread since it is a web application and several users may use it as the same time.

All files are given in the *.rar file, VB project: range2.vbp.